



External Fire Fighting Systems

Pump Systems

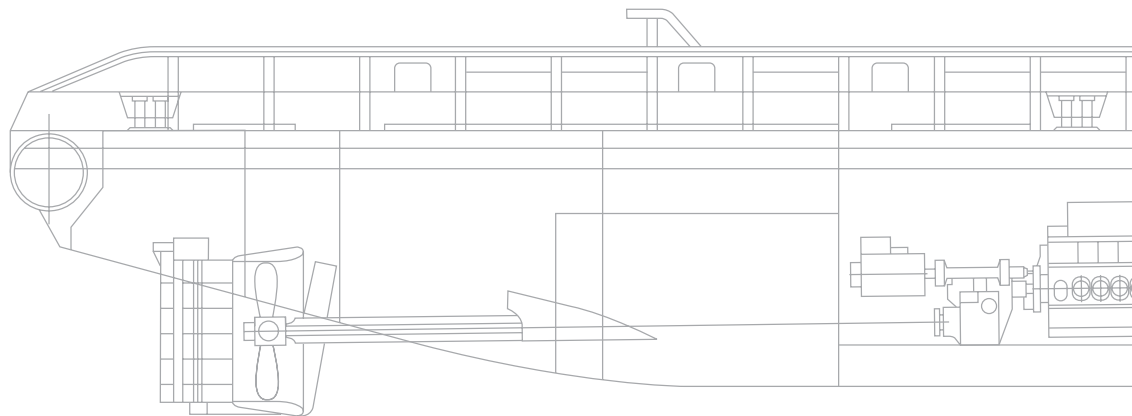
Fire fighting systems

Hamworthy has more than 20 years experience in the design and manufacture of external fire fighting systems

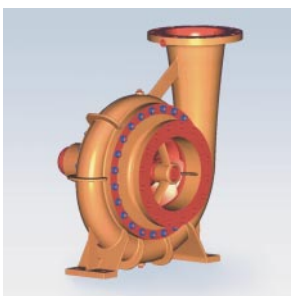
Hamworthy is able to offer complete solution as a single source supplier, supplying main items such as pumps, monitor, gearbox and control system as a package, to secure total integration and compliance with technical requirement, rules and regulation.

Auxiliary equipment such as foam mixing system and oil dispersant system can also be included in our scope of delivery, enhancing the vessel's capability in disaster relief operation.

Hamworthy's quality assurance system is certified according to ISO-9001 and approved by all major classification societies.



Our scope of supply:



1 END SUCTION PUMP
CBF 300 X 350

Single entry, end suction type pump with capacity up to 1600 m³/hr at 150m head.



2 DOUBLE SUCTION -
AXIAL SPLIT PUMP

Axially split double suction type CB pump for FiFi 1, 2 & 3 application. Available in various configurations for ease of system design and installation.



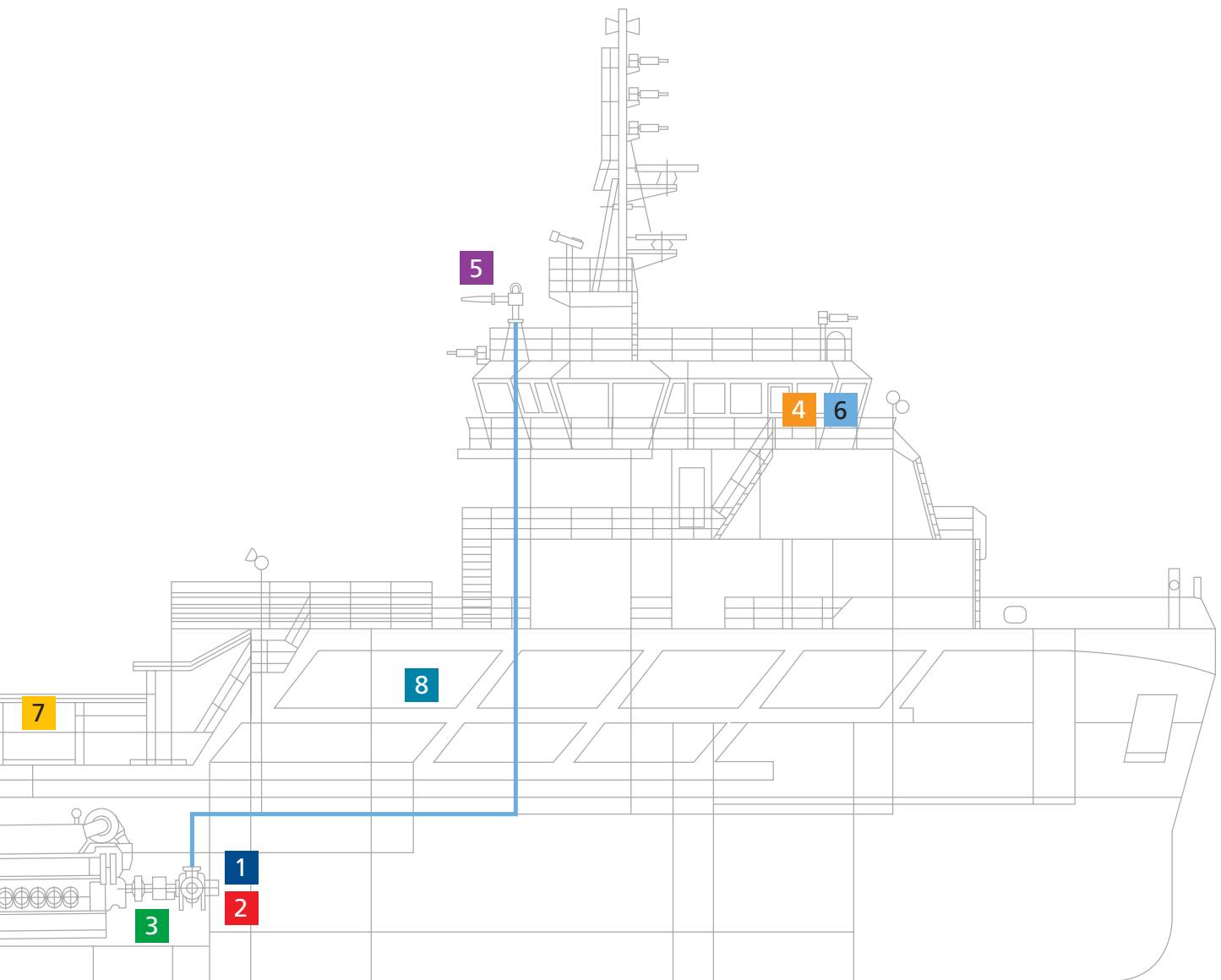
3 STEP-UP GEAR BOX

Horizontally or vertically offset step up gearbox with built in hydraulic clutch, actuated by means of solenoid valve.



4 CLUTCH CONTROL
PANEL

Operation and monitoring of clutch control including interlocking function with main propulsion system.



5 WATER/FOAM MONITOR

Electro-hydraulic remote control type monitor with spray deflector. Two hand wheel built onto the monitor for emergency manual operation.



6 MONITOR CONTROL SYSTEM

Fix or portable remote control panel with joystick for monitor control.



7 HOSE STATION

Hose station and accessories according to class requirement.



8 OIL DISPERSANT SYSTEM

Complete oil dispersant system including oil booms, dispersant pump and mixing unit.

Experience

With larger vessels being built to support deep sea drilling, our experience enables us to support the ship owners in this development, thus ensuring success in operating in harsh marine environments.

References



'Armada Tuah 23'

The 59m offshore anchor handling tug/supply vessel '*Armada Tuah 23*' was built in 2005 by Nam Cheong shipyard, East Malaysia for Bumi Armada Navigation Sdn Bhd in Malaysia. The ABS classed 1465dwt vessel with a FiFi 1 system was fitted with Hamworthy 2 x C22BA 1500m³/hr fire pump at 14 bar and 2 x 1200m³/hr FEH 200 water monitors c/w water curtain system.



'Jasper'

Hamworthy delivered systems to two 60m offshore anchor handling tug/supply vessels for CH Offshore in 2004. Built at Keppel Singmarine shipyard in Singapore both vessels have Hamworthy 2 x CB22BA 1500m³/hr fire pumps at 14 bar and 2 x 1200m³/hr FEH200D water/foam monitors c/w water curtain system meeting FiFi 1 requirements. Pictured is the '*Jasper*'.



'Jaya Puffin 2'

The '*Jaya Puffin 2*' is a 494dwt, 48m offshore supply/utility vessel. Built by Tuong Aik shipyard, East Malaysia in 2004, it is a fine example of the convergence between the design of offshore tugs and supply vessels. The BV class vessel with FiFi 1/2 is fitted with a Hamworthy C12BA 1200m³/hr fire pump at 13 bar and 2 x 600m³/hr water/foam monitor. The vessel was delivered to a Qatar based owner.

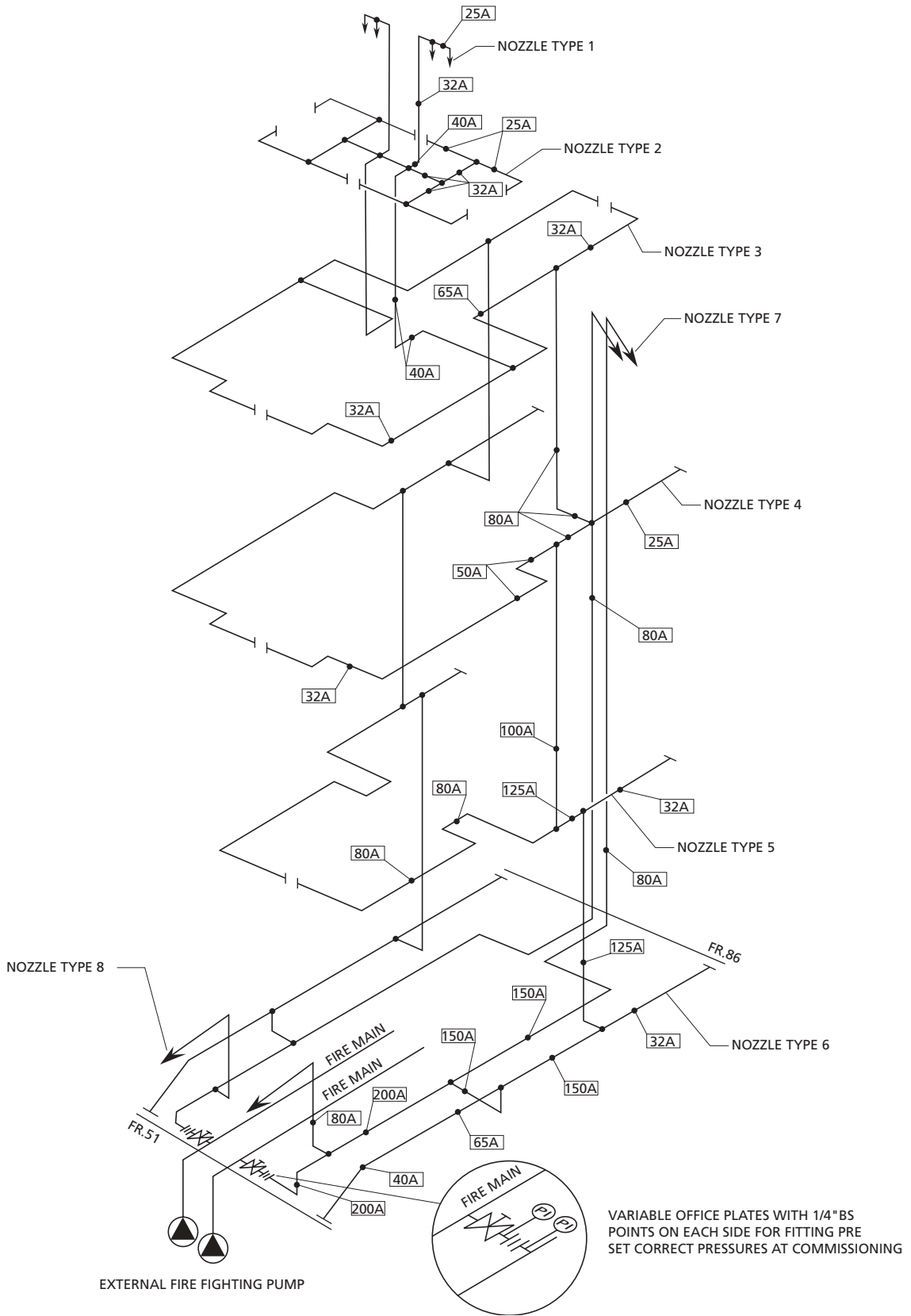
Safety & protection

Hamworthy is trusted by fire boat operators because of our unique blend of quality and experience

Hamworthy utilise the most advanced computer software in designing the water spray system, achieving optimal performance and ensure safety of the crews during fire fighting mode.



WATER SPRAY SYSTEMS - GENERAL ISOMETRIC DIAGRAM





Worldwide sales and service network

Our global network of sales and service centres ensures that we can provide first class technical, spares and service support to our customers wherever they are around the world. In addition to our sales and service locations, we are supported by agent representatives in all major shipping areas.

Hamworthy Pte. Ltd
15 Benoi Crescent,
Jurong,
Singapore 629 978
tel: +65 6261 6066
fax: +65 6261 6011
e-mail: singapore@hamworthy.com

Hamworthy Shanghai
Room 8B, Yi Dian Plaza,
No. 745 ZhaojiaBang Road,
Shanghai 20030
tel: +86 21 644 55665
fax: +86 21 644 59875
e-mail: china@hamworthy.com

Hamworthy Pump Systems
Fleets Corner, Poole
Dorset BH17 0JT
England
tel: +44 (0)1202 662071
fax: +44 (0)1202 666363
e-mail: poolepumps@hamworthy.com

Hamworthy India Pvt. Ltd
35 Mittal Chambers
Nariman Point
Mumbai - 400 021
Tel: +91 22 302 87711 - 15
Fax: +91 22 302 87710
e-mail: india@hamworthy.com



The manufacturers reserve the right to alter the specification and data to incorporate improvements in design. Certified drawings will be issued on request.

© All details copyright Hamworthy plc.