

Model CB

Single stage, centrifugal pumps for marine application



Hamworthy model CB single stage centrifugal pumps for marine application are manufactured in both vertical and horizontal designs for capacities from 500m³/h to 7,000m³/h at total heads up to 200m.w.g. The selected pump speed varies between 600 r.p.m. and 1800 r.p.m. according to head and capacity requirements, to ensure the lowest available N.P.S.H. value.

Hydraulically the pumps are designed for high efficiency and reliable suction performance and are noted for their robust construction and operating reliability.

The casing is axially split and is of a single or double volute type with both suction and discharge flanges on the lower half, or rear half in vertical execution. The short amply dimensioned stainless steel shaft is completely protected from the pumped liquids and runs in grease lubricated deep groove ball bearings. Renewable wear rings are shrunk on and locked to the hydraulically balanced double entry impeller.

A feature exclusive to the Hamworthy CB pump is the fluid barrier protection of the mechanical seals. This seal lubrication system ensures that regardless of pumping conditions, the seal faces cannot normally run dry. This extends their life significantly, improving the pump reliability and reducing maintenance time and costs.

Well proven -

more than 10,000 pumps in service.

Known for reliability and easy maintenance -

preferred by shipowners worldwide.

Compact design -

minimum floor space requirement.

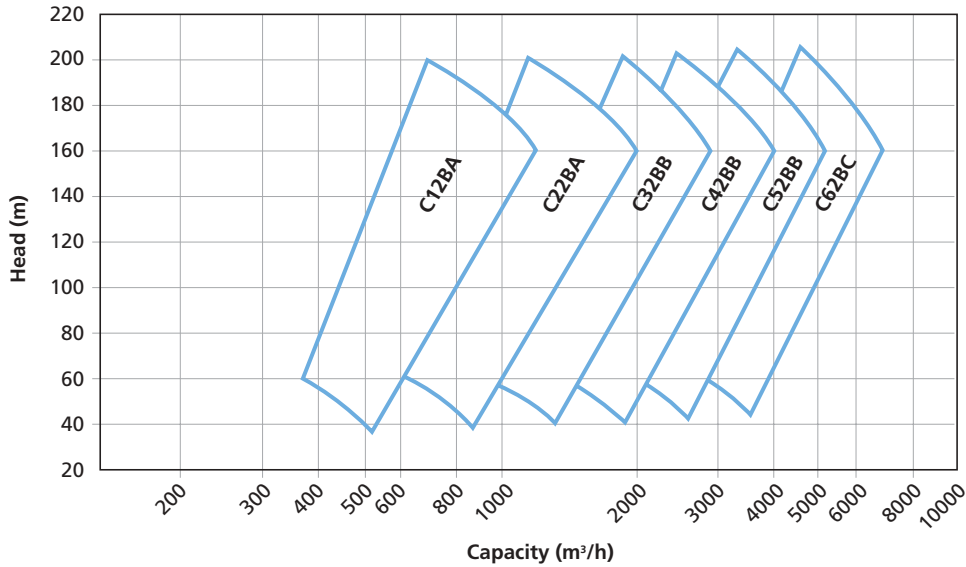
Fluid barrier protection of the mechanical seals -

extended life, reduced maintenance time and costs.

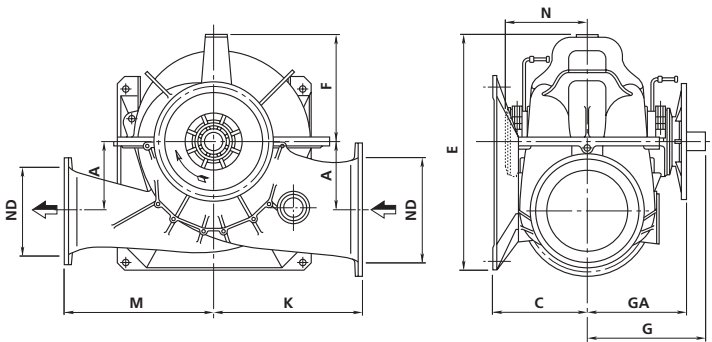
First class spares and service support -

spares available from stock in Europe, Far East and U.S.A.

Capacity Range



Outline Dimensions



Materials

Duty	Sea Water	Fresh Water
Casing	Ni. Al. Bronze	Nodular Cast Iron
Impeller	Ni. Al. Bronze	Ni. Al. Bronze
Shaft	Stainless Steel	Stainless Steel
Seal	Mechanical Seal	Mechanical Seal

Other materials are available on request

Pump Type - Size	Dimensions (mm)											Weight (kg)
	Suction ND	Delivery ND	A	C	E	F	G	GA	K	M	N	
C12BA 10-14	350	250	300	500	950	430	570	450	580	630	400	790
C22BA 12-16	400	300	315	530	990	435	570	450	630	630	400	870
C32BA 14-18	450	350	315	550	1030	510	570	450	630	630	400	1000
C42BB 16-20	500	400	355	630	1200	560	670	575	750	750	480	1270
C42BB 18-24	600	450	355	630	1200	560	670	575	750	750	480	1300
C52BB 18-24	600	450	420	690	1265	625	670	575	850	850	480	1730
C52BB 20-28	700	500	420	690	1265	625	670	575	850	850	480	1740
C62BC 20-28	700	500	450	750	1450	710	830	680	950	950	560	2630

Hamworthy Pte. Ltd
15 Benoi Crescent,
Jurong,
Singapore 629 978

tel: +65 6261 6066
fax: +65 6261 6011
e-mail: singapore@hamworthy.com

Hamworthy Pump Systems AS
Solbraaveien 10, PO box 53
NO-1371 Asker, Norway
Enterprise No: 985 958 335

tel: +47 815 48600
fax: +47 815 48610
e-mail: pumpinfo@hamworthy.com

Hamworthy Pump Systems
Fleets Corner, Poole
Dorset BH17 0JT
England

tel: +44 (0)1202 662071
fax: +44 (0)1202 666363
e-mail: poolepumps@hamworthy.com



The manufacturers reserve the right to alter the specification and data to incorporate improvements in design. Certified drawings will be issued on request.

© All details copyright Hamworthy plc.