

# Engine Room Pumps

Model CG

Pump Systems

# Model CG

Hamworthy has more than 100 years experience in design and manufacturing of centrifugal pumps for the marine industry.

Hamworthy model CG single stage centrifugal pumps for marine application are designed for long and reliable service life and are only manufactured in a vertical design.

The pumps are radially split and the complete rotating element can be dismantled independently of the motor and piping connections.

Model CG is noted for its robust construction and operating reliability and a unique hydraulic design gives a compact unit with modest space requirement and low weight of parts to be handled. The shaft runs in an amply dimensioned bearing of anti friction type whereas the lower part runs in an over dimensioned bush bearing.

#### **Well proven -**

more than 10,000 pumps in service.

#### **Known for reliability and easy maintenance -**

preferred by shipowners worldwide.

#### **Radially split, flexible spacer coupling -**

easy dismantling of rotor element without removal of motor.

#### **Compact design -**

minimum floor space requirement.

#### **Three fixing points -**

minimal support structure needed.

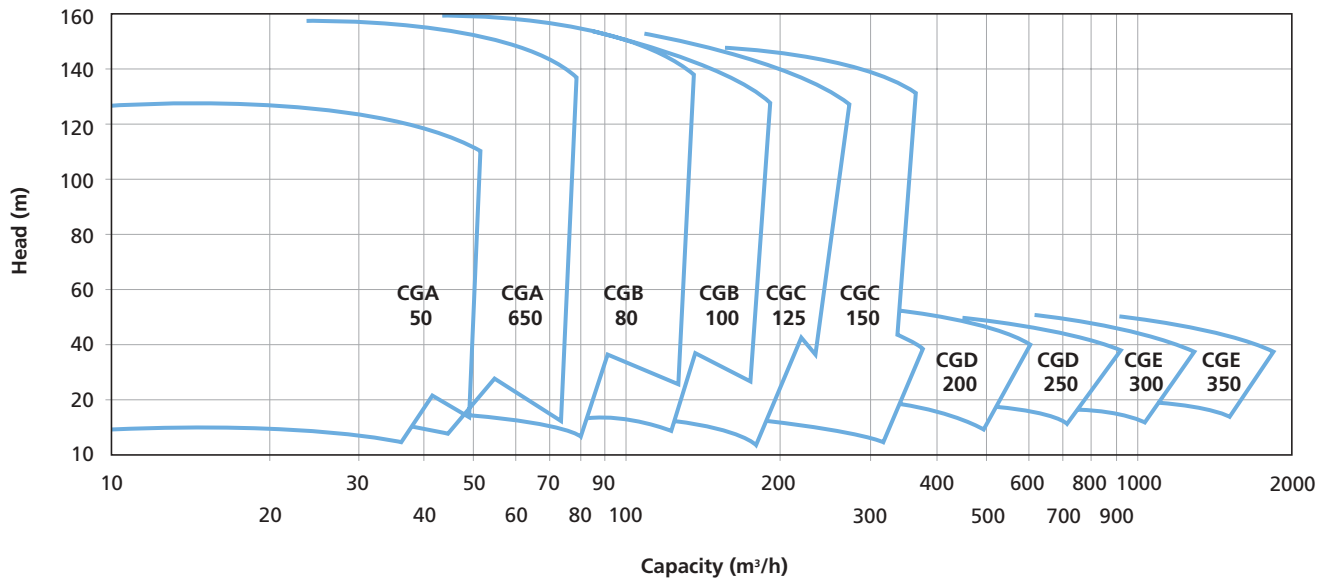
#### **First class spares and service support -**

spares available from stock in Europe, Far East and U.S.A.



Typical Hamworthy CG pump installation onboard vessel

## Capacity Range

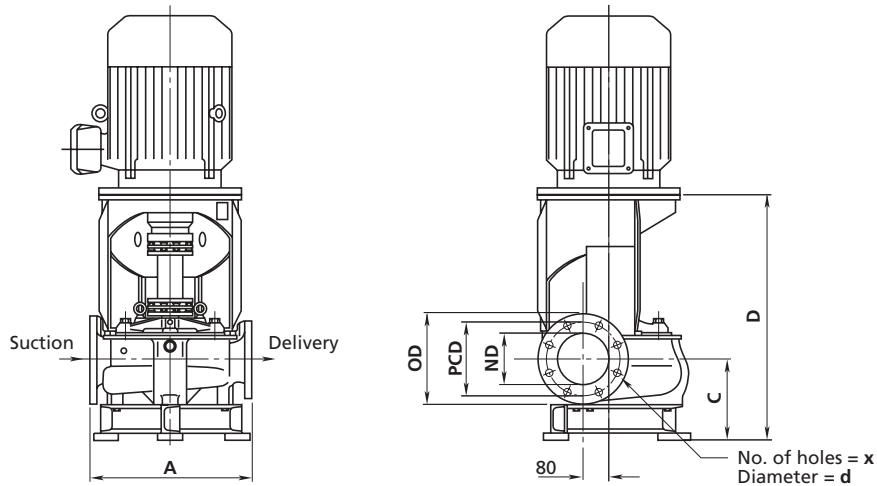


## Materials

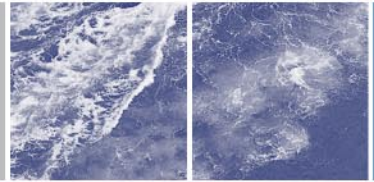
Duty	Sea Water	Fresh Water
Casing	Bronze	Cast Iron
Impeller	Ni. Al. Bronze	Ni. Al. Bronze
Shaft	Stainless Steel	Stainless Steel
Sealing	Mech. Seal	Mech. Seal
Bearing	Ball/Bush	Ball/Bush

Other materials are available on request

## Outline Dimensions



Pump size	Flange dimensions to DIN2501 Pressure rating 10 bar										Dimensions (mm)		
	Delivery flange					Suction flange					A	C	D
	ND	OD	PCD	d	X	ND	OD	PCD	d	X			
CGA 50	50	165	125	18	4	65	185	145	18	4	420	195	578
CGA 65	65	185	145	18	4	80	200	160	18	8	420	196	584
CGB 80	80	200	160	18	8	100	220	180	18	8	450	218	643
CGB 100	100	220	180	18	8	125	250	210	18	8	450	224	657
CGC 125	125	250	210	18	8	150	285	240	22.5	8	500	247	744
CGC 150	150	285	240	22.5	8	200	340	295	22.5	8	560	260	768
CGD 200	200	340	295	22.5	8	250	395	350	22.5	12	630	332	970
CGD 250	250	395	350	22.5	12	300	445	400	22.5	12	710	382	1020
CGE 300	300	445	400	22.5	12	350	505	460	22.5	16	800	490	1257
CGE 350	350	505	460	22.5	16	400	565	515	26.5	16	900	560	1327



#### Worldwide sales and service network

Our global network of sales and service centres ensures that we can provide first class technical, spares and service support to our customers wherever they are around the world. In addition to our sales and service locations, we are supported by agent representatives in all major shipping areas.

Hamworthy Pte. Ltd  
15 Benoi Crescent,  
Jurong,  
Singapore 629 978

tel: +65 6261 6066  
fax: +65 6261 6011  
e-mail: [singapore@hamworthy.com](mailto:singapore@hamworthy.com)

Hamworthy Pump Systems AS  
Solbraaveien 10, PO box 53  
NO-1371 Asker, Norway  
Enterprise No: 985 958 335

tel: +47 815 48600  
fax: +47 815 48610  
e-mail: [pumpinfo@hamworthy.com](mailto:pumpinfo@hamworthy.com)

Hamworthy Pump Systems  
Fleets Corner, Poole  
Dorset BH17 0JT  
England

tel: +44 (0)1202 662071  
fax: +44 (0)1202 666363  
e-mail: [poolepumps@hamworthy.com](mailto:poolepumps@hamworthy.com)



The manufacturers reserve the right to alter the specification and data to incorporate improvements in design. Certified drawings will be issued on request.

© All details copyright Hamworthy plc.