

Engine Room Pumps

Model CA

Pump Systems



Model CA

Hamworthy has more than 100 years experience in design and manufacturing of centrifugal pumps for the marine industry.

Hamworthy model CA single stage centrifugal pumps for marine application are manufactured in both vertical and horizontal designs for capacities from 380m³/hr to 6000m³/hr at total heads up to 50m.w.g. The selected pump speed varies between 600 rpm and 1800 rpm according to head and capacity requirements to ensure a good N.P.S.H. value.

The pumps are designed for high efficiency and reliable suction performance and they are noted for their robust construction and operating reliability.

The casing is axially split with both suction and discharge flanges on the lower half, or rear half in vertical execution. The short amply dimensioned stainless steel shaft runs in grease lubricated deep groove ball bearings.

The impeller is hydraulically balanced and with double entry.

A feature exclusive to the Hamworthy CA pump is the fluid barrier protection of the mechanical seals. This seal lubrication system ensures that regardless of pumping conditions, the seal faces cannot normally run dry. This extends their life significantly, improving the pump reliability and reducing maintenance time and costs.

Well proven -

more than 10,000 pumps in service.

Known for reliability and easy maintenance -

preferred by shipowners worldwide.

Compact design -

minimum floor space requirement.

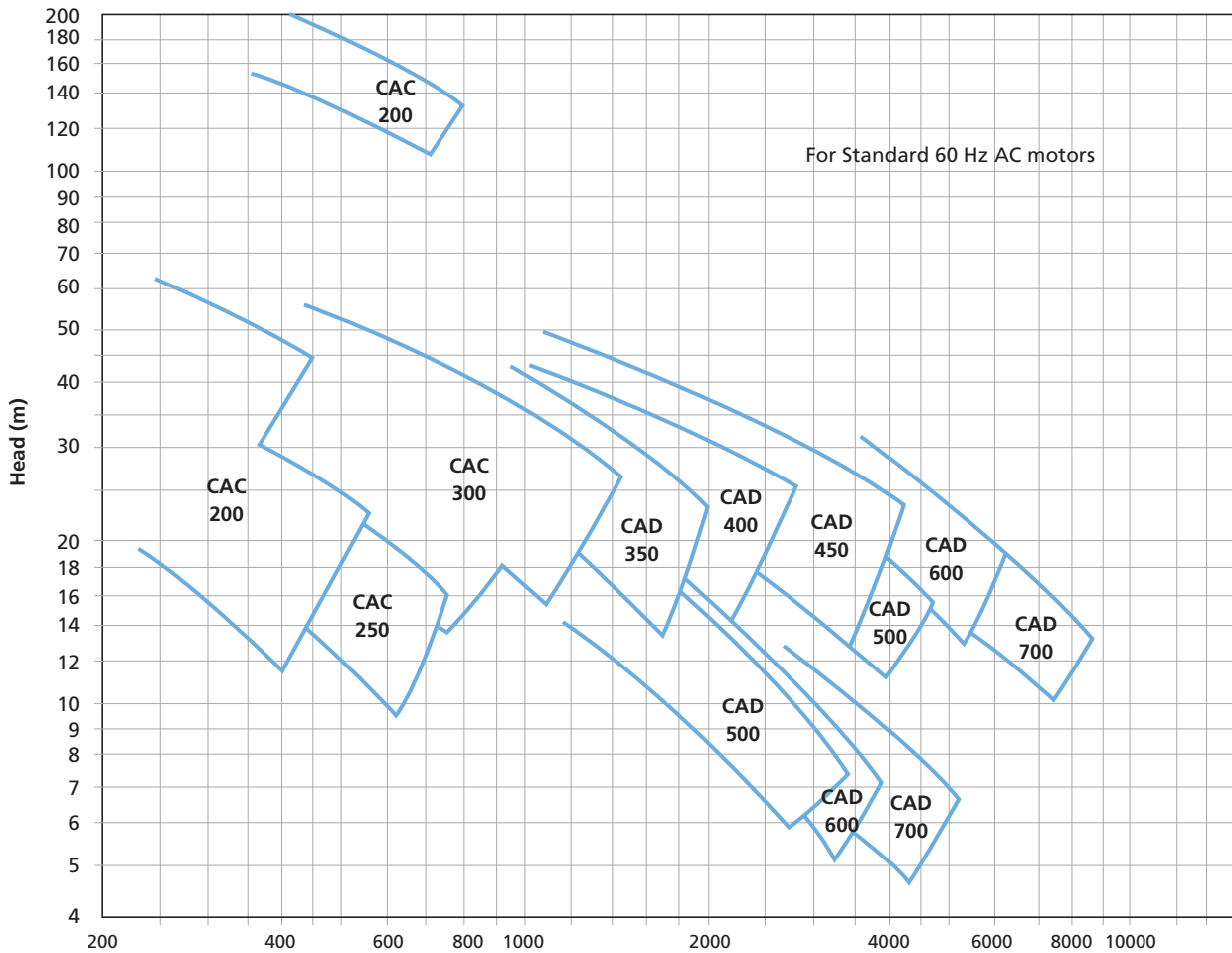
Fluid barrier protection of the mechanical seals -

extended life, reduced maintenance time and costs.

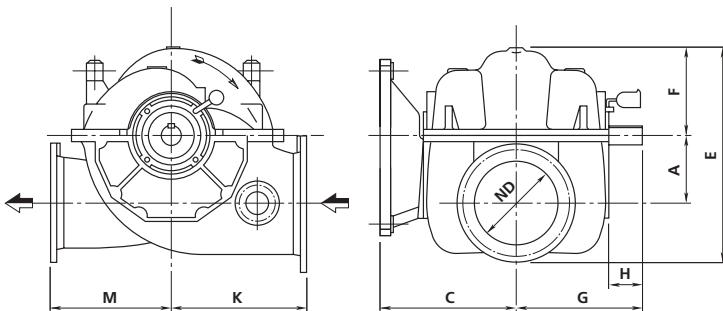
First class spares and service support -

spares available from stock in Europe, Far East and U.S.A.

Capacity Range



Outline Dimensions

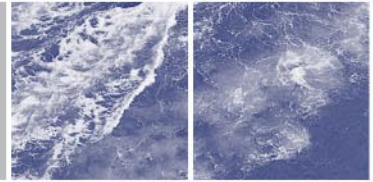
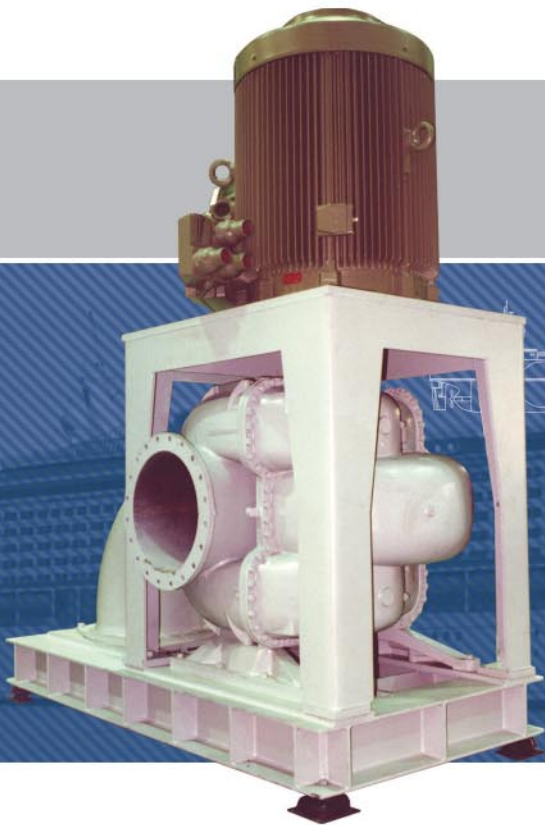


Materials

Duty	Sea Water	Fresh Water
Casing	Ni. Al. Bronze	Nodular Cast Iron
Impeller	Ni. Al. Bronze	Ni. Al. Bronze
Shaft	Stainless Steel	Stainless Steel
Seal	Mechanical Seal	Mechanical Seal

Other materials are available on request

Pump size	Dimensions (mm)										Weight (kg)
	Inlet ND	Outlet ND	A	C	E	F	G	H	K	M	
CAC 200	200	200	200	400	395	256	345	120	400	400	440
CAC 250	250	250	225	400	423	288	345	120	450	450	470
CAC 300	350	300	250	425	792	316	370	120	560	560	620
CAD 350	400	350	280	563	563	355	523	135	560	500	970
CAD 400	450	400	340	600	648	415	523	98	630	560	1270
CAD 450	500	450	380	705	715	480	618	93	750	600	1610
CAD 500	600	500	400	705	790	505	618	93	780	680	1700
CAD 600	700	600	480	830	1531	604	738	93	900	750	2400
CAD 700	810	710	500	960	1693	690	818	43	1080	800	3500



Worldwide sales and service network

Our global network of sales and service centres ensures that we can provide first class technical, spares and service support to our customers wherever they are around the world. In addition to our sales and service locations, we are supported by agent representatives in all major shipping areas.

Hamworthy Pte. Ltd
15 Benoi Crescent,
Jurong,
Singapore 629 978

tel: +65 6261 6066
fax: +65 6261 6011
e-mail: singapore@hamworthy.com

Hamworthy Pump Systems AS
Solbraaveien 10, PO box 53
NO-1371 Asker, Norway
Enterprise No: 985 958 335

tel: +47 815 48600
fax: +47 815 48610
e-mail: pumpinfo@hamworthy.com

Hamworthy Pump Systems
Fleets Corner, Poole
Dorset BH17 0JT
England

tel: +44 (0)1202 662071
fax: +44 (0)1202 666363
e-mail: poolepumps@hamworthy.com



The manufacturers reserve the right to alter the specification and data to incorporate improvements in design. Certified drawings will be issued on request.

© All details copyright Hamworthy plc.