

AVT 04B

Vacuum Flush Toilet (Bulkhead Mount)



The Hamworthy vacuum flush toilet has been designed to be mechanically simple, operationally reliable and stylish in appearance. It uses air to drive waste through the toilet and vacuum piping to the treatment tank or intermediate collection tank. By using only approximately 1 litre of water, a dramatic reduction in the amount of wastewater is realised. This contemporarily styled toilet has a built-in vacuum breaker and flush memory. The control mechanism can be accessed without removing the bowl.

Features

- ▶ Contemporary styling
- ▶ Minimum space requirements
- ▶ Low water consumption
- ▶ Simple to install - supplied complete, ready to connect
- ▶ Quiet operation
- ▶ Maintenance in-situ
- ▶ Easy deck cleaning

Operation

The toilet is activated by pressing and releasing the push-button located rear of the bowl. The toilet is equipped with a vacuum circuit that automatically controls the flush cycle. The controls have timing circuitry which allows the discharge valve to open and empty the contents of the bowl. Simultaneously, the water valve opens causing water to flow into and rinse the bowl. The water valve remains open long enough after the discharge valve has closed for a residual pool to accumulate in the bowl. In the event of vacuum drop, the unit's memory registers the activation and completes the flush cycle, once the vacuum is restored to the appropriate level.

Material Specification

Bowl	Vitreous china, white
Seat & cover	Impact resistant plastic
Mechanism	Plastic - ABS
Mechanism	Rubber - EPDM

Operating Data

Operating vacuum	-0.4 bar to -0.6 bar
Water pressure	1.5 bar to 8.0 bar
Water consumption	1 litre to 1.5 litres/flush

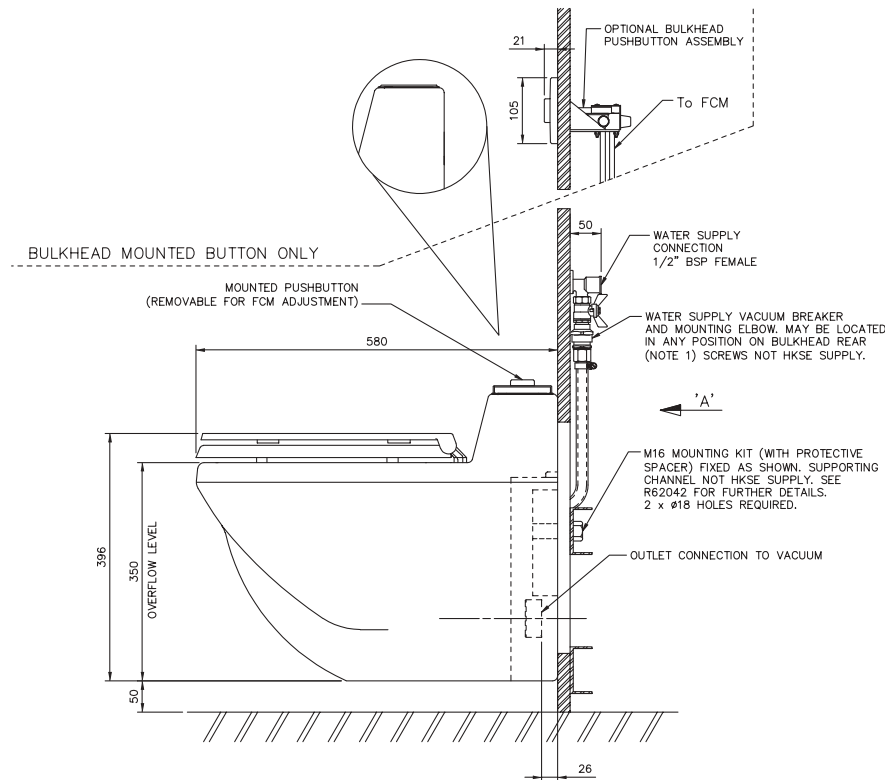
Notes

1. Additional reinforcements may be required depending upon the bulkhead thickness and material.
2. Vacuum breaker, 90° elbow or straight connector and all mechanism and bowl inter connecting hoses are supplied with the toilet.

Installation Data and Interface requirements

Net Weight 28 kg

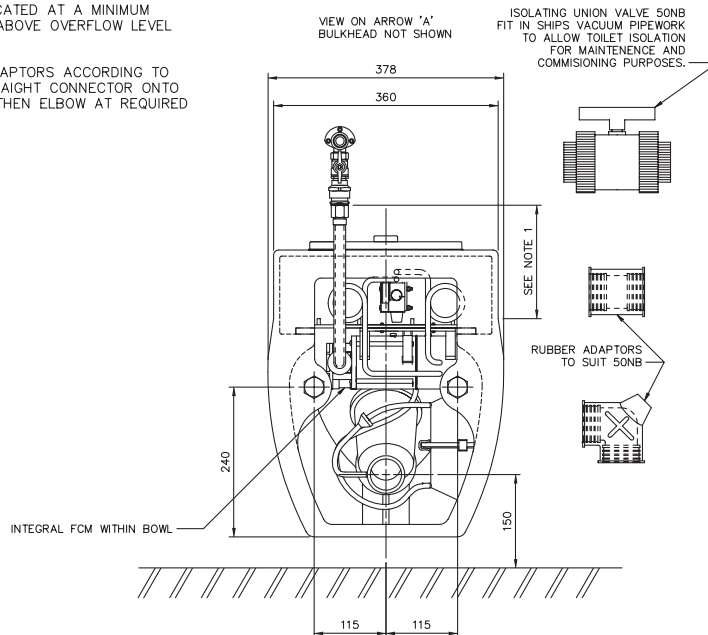
Dimensions (mm)



NOTE:

If bulkhead mounted pushbutton option is selected access port for FCM adjustment will be blanked. For button installation please see toilet installation drawing R62042.

1. VACUUM BREAKER MUST BE LOCATED AT A MINIMUM VERTICAL DISTANCE OF 150MM ABOVE OVERFLOW LEVEL OF TOILET.
2. CUSTOMER TO FIT PIPEWORK ADAPTORS ACCORDING TO REQUIREMENTS. USE EITHER STRAIGHT CONNECTOR ONTO SHIPS PIPEWORK OR STRAIGHT THEN ELBOW AT REQUIRED POSITION.



Hamworthy Water Systems Limited
 Fleets Corner, Poole, Dorset BH17 0JT. England.
 tel: +44(0)1202 662600. fax: +44(0)1202 668793.
 e-mail: info@hamworthy.com
 website: www.hamworthy.com/wastesystems

a subsidiary of Hamworthy plc



The manufacturers reserve the right to alter the specification and data to incorporate improvements in design. Certified drawings will be issued on request.

© All details copyright Hamworthy plc.